



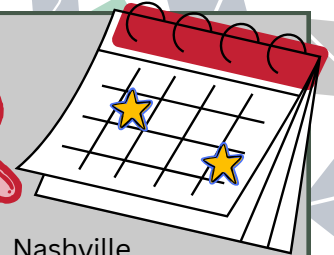
LOGAN COUNTY 4-H NEWSLETTER

Logan County Extension 255 John Paul Ave. Russellville, KY 42276 (270) 726-6323

In This Issue

- 1 Calendar Dates
- 2 New Clubs
- 3 Camp
- 4 Communications
- 4 Country Ham
- 5 Livestock Info
- 5 Steer Show
- 6 Coloring Contest
- 6 Fundraiser Shirt
- 6 Recipe
- 7 County Fair
- 7 Poster Contest
- 8 Club Information
- 9 Coloring Page

Upcoming Dates to REMEMBER



Apr. 1	8:00am	Teen Climbing Adventure	Nashville
Apr. 3	10:00am	Homeschool Club	Ext. Complex
Apr. 8	8:30am	Entrepreneurship Workshop	Ext. Office
Apr. 11	4:00pm	Teen Club	Ext. Office
Apr. 14	3:45pm	Clean and Green 4-H Club	Conservation Office
Apr. 14	5:30pm	Horse Club	Elin Pitts Farm
Apr. 15	4pm-7pm	Steer Show Weigh-In	Ext. Arena
Apr. 17	10:00am	Homeschool Club	Ext. Complex
Apr. 21	4:00pm	Preschool Spring Fling	Ext. Complex
Apr. 22	6:00pm	County Communication Contest	Ext. Office
Apr. 25	3:00pm	Cloverbud Club	Ext. Complex
May 2	2:30pm	Cross Stich Club	Ext. Office
May 5	6:00pm	Area Communications Contest	Barren Co. Middle Sch.
May 12	3:45pm	Clean and Green 4-H Club	Conservation Office
May 15	DEADLINE	Livestock (Swine) Validation	Contact Maci
May 19	5:30pm	Country Ham Project Class	Warren Co. Ext. Office
May 23	2:30pm	Cross Stich Club	Ext. Office
May 27	1:00pm	Steer Show	Ext. Arena
Jun. 2	DEADLINE	4-H Camp Registration	Ext. Office
Jun. 10	-Jun. 13	Teen Conference	Lexington, KY
Jun. 14	12:30pm	Country Ham Project Day	Clifty Farm, Scottsville
Jun. 16	-Jun. 17	County Fair Exhibits Due	Ext. Office
Jun. 21	9am-1pm	County Fair Kick-Off Day	Ext. Property
Jul. 7	-Jul. 11	County Fair Livestock Shows	Ext. Arena
Jul. 19	12:30pm	Country Ham Project Day	Clifty Farm, Scottsville
Jul. 21	-Jul. 24	4-H Camp	West Ky 4-H Camp

4-H Camp Paperwork available starting April 14th!

To Enroll for the 24-25 year

Scan Here!

or visit the Extension Office



Maci Venable
Maci Venable
Extension Agent for
4-H Youth Development



STAY UP TO DATE

Follow us on Facebook:
Logan County 4-H



Disabilities accommodated with prior notification.

NEW!

LOGAN COUNTY 4H CLEAN AND GREEN CLUB

For 3rd Grade
and Up!!



Snacks
Provided!!

April 14, 2025

3:45 pm

Logan County Conservation
District Office

253 Hopkinsville Rd. Russellville, KY

Please RSVP to Monica Nolan
270-772-1458 by April 7th!



Pictured above: Teen Club's First Meeting
During the meeting, 4-Her's made plans for the
2025-2026 year and played leadership games.

LOGAN COUNTY 4-H **TEEN CLUB**



Join the Next Generation of Leaders at Our New 4-H Teen Club!

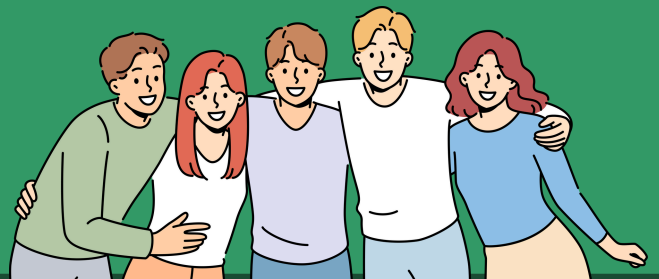
Are you a teen in 8th-12th grade eager to make a difference and build your leadership skills? Look no further! Our exciting new 4-H Teen Club is the perfect place for you to connect with like-minded peers, unleash your potential, and lead impactful projects in your community. From organizing events to learning from inspiring mentors, you'll gain invaluable experiences and friendships that will last a lifetime. Don't miss the opportunity to grow, lead, and shine! Sign up today and be a part of something extraordinary.

To join the Teen Club Remind

Send a text to: 81010

Text this message: @O30725

Contact maci.venable@uky.edu or call
270-726-6323 for more information.





LOGAN COUNTY

4-H Camp

CAMPLIFY YOUR SUMMER!

TEENS AND ADULTS NEEDED FOR COUNSELORS

MUST HAVE COMPLETED 3RD GRADE BY JUNE 2025



JULY 21-24, 2025

WEST KY 4-H CAMP DAWSON SPRINGS, KY

3RD-8TH GRADE | **CAMP COST \$50.00** | **REGISTER BY JUNE 2ND**

GAMES & RECREATION

COOKING

ARTS & CRAFTS

EXPLORE NATURE

FISHING

SWIMMING

For more info contact maci.venable@uky.edu | 270-726-6323

Cooperative Extension Service

Agriculture and Natural Resources
Family and Consumer Sciences
4-H Youth Development
Community and Economic Development

MARTIN-GATTON COLLEGE OF AGRICULTURE, FOOD AND ENVIRONMENT

Educational programs of Kentucky Cooperative Extension serve all people regardless of economic or social status and will not discriminate on the basis of race, color, ethnic origin, national origin, creed, religion, political belief, sex, sexual orientation, gender identity, gender expression, pregnancy, marital status, genetic information, age, veteran status, physical or mental disability or reprisal or retaliation for prior civil rights activity. Reasonable accommodation of disability may be available with prior notice. Program information may be made available in languages other than English. University of Kentucky, Kentucky State University, U.S. Department of Agriculture, and Kentucky Counties, Cooperating. Lexington, KY 40506



Cooperative Extension Service



LOGAN COUNTY 4-H COMMUNICATIONS NIGHT

SPEECH, DEMONSTRATION AND MOCK INTERVIEW CONTESTS

TUESDAY, APRIL 22ND

6:00PM

LOGAN COUNTY EXTENSION OFFICE

WINNERS WILL ADVANCE TO AREA CONTEST!

4-H COUNTRY HAM PROJECT

HAM CURING DATES: **MARCH 29**, JUNE 14, JULY 19

Ham Curing will take place at Clifty Farm in Scottsville, KY. Parents must provide transportation to and from Clifty Farm.

STATE FAIR DATE: AUGUST 14TH Must have registered for Project.



**LOGAN COUNTY 4-H
LIVESTOCK CLUB**

To Join Remind
Send a text to: 81010
Text this message: @lc4hli

All 4-H Livestock Exhibitors are required to have 6 hours of Livestock Education prior to the show. Please join the Livestock Club Remind Class Code **@lc4hli** for all updates and upcoming education opportunities.



LOGAN Co. CATTLEMEN QUARTERLY MEETING
MAY 22, 2025 6:30 PM
LC Extension Office

LOGAN COUNTY CATTLEMEN ASSOCIATION

STEER SHOW, SALE & CARCASS CONTEST

36 Exhibitors Weighed in
55 Steers

DATES TO KNOW

Preliminary Weigh In
April 15 4pm - 7pm

Show Day
May 27 1pm

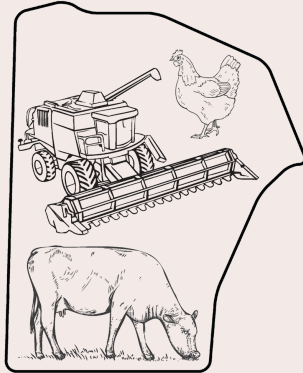
Call the Extension Office for more information 270-726-6323



LOGAN COUNTY CATTLEMEN'S ASSOCIATION
YOUTH MARKET STEER
SHOW, SALE, & CARCASS
CONTEST

County Agriculture Coloring Contest!

Complete the coloring page included on the back page of this newsletter and return it to the Extension Office by April 18th for a chance to have your picture included on the map at the Ky State Fair in August.



UK Martin-Gatton
College of Agriculture,
Food and Environment
University of Kentucky

SUPPORT LOCAL 4-H SCHOLARSHIPS THROUGH THE JOHN SWACK 4-H FOUNDATION



COST:
\$15.00

Deadline to order: April 15th

Bunny-Cakes for Easter



Makes 8 single pancakes servings
140 calories per serving

Ingredients:

- 1 ½ cups whole-wheat flour
- 2 tablespoons light brown sugar
- 2 teaspoons baking powder
- 1 ½ cups skim milk
- 1 large egg
- 1 teaspoon vanilla
- 2 mashed bananas
- Fruit for decorating

Directions:

1. In a large mixing bowl, whisk together the flour, brown sugar and baking powder.
2. Make a well in the center of the dry ingredients. Add milk, egg and vanilla. Whisk the liquid ingredients.
3. Incorporate the dry ingredients until well combined. Fold in mashed bananas.
4. Heat a large skillet over medium heat.
5. Spray pan with cooking spray. Ladle about ¼ cup of pancake batter onto heated skillet.
6. Cook until batter starts to bubble at the top and the bottom is evenly browned. Flip and continue cooking until lightly browned.
7. Serve with maple syrup or fruit, if desired.
8. Garnish with assorted fruit to create fun faces, if desired.



VOLUNTEERS NEEDED!

Logan County 4-H is looking for Volunteers to lead clubs, mentor kids, and build relationships. 4-H offers programs for the whole family. You can try something new, get outdoors, teach your passion, and give back, while giving kids the opportunity of a lifetime!

Contact the Extension Office at 270-726-6323 for more information.





**SAVE
THE
DATE**

County Fair

Start planning your exhibits now!

Do you like to bake, make crafts, or grow plants? You can enter your projects as an exhibit in the Logan County Fair!

Exhibits will be judged and winners will advance to the Kentucky State Fair in August! Below is a list categories that you can enter your projects in.

- Tobacco Plants
- Horticulture & Plant Science
- Electrical Project
- Wood Science Project
- Entomology (Insects) & Honey
- Forestry
- Geology
- 4-H Arts
 - Printing
 - Drawing
 - Fiber Arts
 - Sculpting
 - Trends and Heritage Arts
- Photography
- Sewing
- Needlework
 - Crochet
 - Hand Embroidery
 - Knitting
 - Quilting
- Foods & Food Preservation
- Home Economics
- 4-H Leadership & Communications
- Kentucky 4-H Trends
- 4-H Crops
- Consumer & Financial Education

Exhibits will be due to the Extension Office on June 16 & 17. If you would like more information or category rules, please call 270-726-6323, email maci.venable@uky.edu or see our website: logan.ca.uky.edu/4h-youth-development

Kick-Off Day and Exhibit Hall

JUNE 21st 9am-1pm

Don't forget to come out and see your projects on display June 21st at the Extension Office during County Fair Kick-Off day! There will be other events and entertainment throughout the day.

Logan County Fair Livestock Shows

All Shows at the Extension Ag Arena

July 7	6:00pm	Beef Show
July 8	10:00am	Dairy Show
July 9	1:00pm	Alpaca Show
July 10	5:00pm	Sheep Show
July 10	6:30pm	Goat Show
July 11	6:00pm	Hog Show

4-H Poster Contest!

Don't forget 4-H Posters are due to the Extension Office by May 1st. Posters should promote 4-H and be 14x22 (half poster board) size. Contact the Extension Office for more information.

Logan County 4-H Clubs

Clean & Green Club

Led by Monica Nolan, this new club will focus on conservation, recycling, and preserving the world around us. Expect to get your hands dirty when you join this club!

Meets monthly
at the Conservation Office

Back to the Roots

Led by Natalie Davenport, the Back to the Roots Club explores "all the things your grandmother would have known." From cooking to bees, to gardening to animals, and more!

Meets monthly
at the Extension Office

Cloverbuds

Open to kids ages 5-8, Cloverbud Club is an introduction to 4-H. Join us to learn life skills, learn about the world, and have fun!

Meets monthly
at the Extension Complex

After School Clubs

Most Logan County and Russellville schools have an after school 4-H Club for 3rd-8th graders. Meeting topics vary from school to school.

*Some school clubs may not be meeting at this time.

Meetings determined by each School.

Join one of our active clubs or start a new one!

For more information, call 270-726-6323 or
email maci.venable@uky.edu

Teen Club

Looking for leadership opportunities? Teen Club is for you! Meant for 4-Her's ages 13-18, Teen Club will focus on leadership skills and activities while taking fun trips.

Meets monthly
at the Extension Office

Livestock Club

This club is dedicated to learning about all aspects of caring for and showing Livestock animals. 4-Her's that participate in the Steer Show or Hog Show earn Livestock Education hours by attending these meetings.

Meets monthly at the
Extension Office or Arena

Homeschool Club

Are you a Homeschooler? Join our Homeschool Club to enrich your learning! This club offers a variety of lessons and projects to participate in! Open to ages 5-18!

Meets every other Thursday at 10am
at the Extension Complex

Horse Club

Do you love horses? Our horse club meets every month to learn more about equine care, health, riding, and showing. You do not have to own a horse to participate.

Meets monthly
at various locations

Sewing Club & Cross Stitch Club

If you are interested in sewing or cross stitching, we have a club for you! Project you create may be eligible to be entered in the County or KY State Fair!

Meets at the Extension Office

Cooperative
Extension Service

Agriculture and Natural Resources
Family and Consumer Sciences
4-H Youth Development
Community and Economic Development

MARTIN-GATTON COLLEGE OF AGRICULTURE, FOOD AND ENVIRONMENT

Educational programs of Kentucky Cooperative Extension serve all people regardless of economic or social status and will not discriminate on the basis of race, color, ethnic origin, national origin, creed, religion, political belief, sex, sexual orientation, gender identity/gender expression, pregnancy, marital status, genetic information, age, veteran status, physical or mental disability or reprisal or retaliation for prior civil rights activity. Reasonable accommodation of disability may be available with prior notice. Program information may be made available in languages other than English. University of Kentucky, Kentucky State University, U.S. Department of Agriculture, and Kentucky Counties, Cooperating. Lexington, KY 40506



Disabilities
accommodated
with prior notification.



Cooperative
Extension Service

TOGETHER WE GROW: YOUTH ART CONTEST
LOGAN COUNTY

